

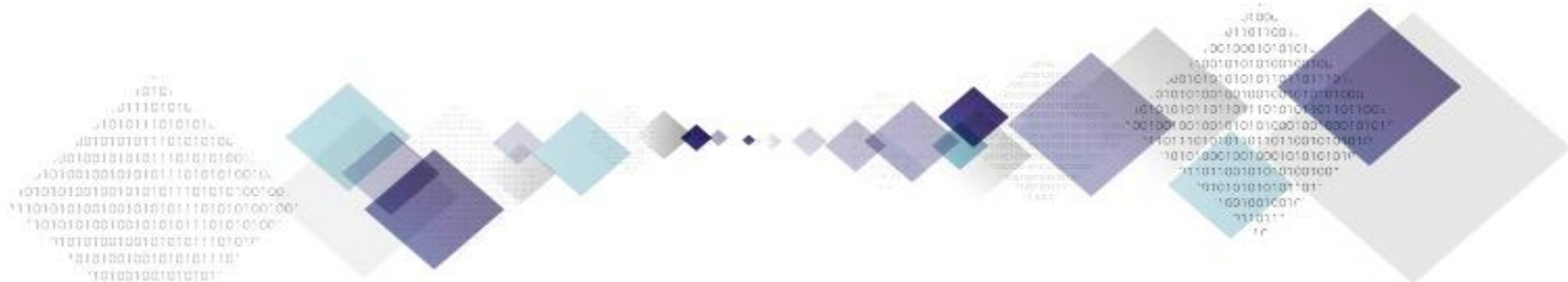
Monthly performance overview: as of 31 January 2018

Asset class overview: performance table

	%mm Performance												Return Characteristics							Risk Characteristics			
	Feb-17	Mar-17	Apr-17	May-17	Jun-17	Jul-17	Aug-17	Sep-17	Oct-17	Nov-17	Dec-17	Jan-18	3M	6M	12M	36M	2016	2017	YTD	Annualised Volatility 1Y	Annualised Volatility 3Y	Maximum Return Drawdown* 1Y	Maximum Return Drawdown* 3Y
Equities - UK	3.1%	1.1%	-1.3%	4.9%	-2.5%	0.9%	1.7%	-0.7%	1.8%	-1.8%	5.0%	-2.0%	1.1%	4.0%	10.4%	25.4%	19.2%	12.0%	-2.0%	9.0%	10.1%	4.0%	20.0%
Equities - Europe Ex UK	2.2%	4.3%	1.1%	5.4%	-1.5%	1.9%	2.4%	-0.6%	1.5%	-1.7%	0.5%	0.9%	-0.3%	3.0%	17.4%	43.1%	19.6%	16.7%	0.9%	7.4%	10.4%	4.4%	18.6%
Equities - US	5.3%	-0.9%	-2.2%	1.9%	-0.3%	0.6%	2.6%	-1.8%	3.3%	1.3%	1.0%	0.8%	3.1%	7.3%	12.0%	59.6%	33.6%	11.2%	0.8%	7.4%	9.9%	6.6%	16.4%
Equities - Global	4.1%	0.3%	-1.6%	2.8%	-0.4%	1.4%	2.7%	-1.8%	3.0%	0.2%	1.5%	0.7%	2.5%	6.5%	13.6%	50.9%	29.5%	13.8%	0.7%	6.5%	9.7%	5.1%	17.5%
Equities - Japan	2.7%	-1.0%	-2.2%	3.3%	0.3%	0.7%	2.1%	-1.7%	5.6%	0.7%	1.2%	-0.5%	1.4%	7.4%	11.3%	51.7%	23.7%	13.6%	-0.5%	7.7%	11.7%	6.0%	19.7%
Equities - Asia ex-Japan	4.5%	1.7%	-2.7%	-0.3%	1.2%	2.9%	2.8%	-4.5%	2.3%	0.1%	3.7%	-1.0%	2.8%	3.3%	10.8%	41.1%	30.1%	16.1%	-1.0%	9.2%	14.0%	6.1%	25.4%
Equities - EM	4.3%	1.5%	-1.0%	3.5%	0.2%	4.6%	4.6%	-4.1%	4.5%	-1.5%	3.5%	3.3%	5.2%	10.3%	25.3%	49.8%	33.4%	25.7%	3.3%	10.1%	15.8%	5.8%	30.1%
Alternatives - Property	4.4%	-2.6%	-2.6%	0.5%	0.2%	0.4%	2.1%	-4.0%	-0.2%	1.3%	1.3%	-6.1%	-3.6%	-5.7%	-5.6%	14.3%	27.1%	-1.4%	-6.1%	10.0%	14.6%	10.9%	17.2%
Alternatives - Private Equity	3.9%	0.5%	1.3%	1.9%	1.1%	1.5%	0.6%	0.3%	0.6%	-1.5%	1.9%	0.2%	0.5%	2.1%	12.9%	58.4%	37.3%	14.9%	0.2%	4.4%	10.2%	4.7%	21.4%
Alternatives - Infrastructure	3.1%	-0.2%	-1.6%	3.1%	-0.6%	0.3%	3.9%	-3.9%	1.5%	-0.3%	0.2%	-3.4%	-3.5%	-2.3%	1.6%	23.8%	29.1%	5.0%	-3.4%	8.5%	10.4%	6.1%	11.9%
Alternatives - Commodities	1.8%	-3.9%	-4.7%	-0.9%	-0.7%	2.1%	3.4%	-3.4%	3.8%	-1.6%	3.2%	-2.7%	-1.2%	2.4%	-4.0%	7.1%	38.5%	-1.6%	-2.7%	10.6%	13.9%	12.6%	25.4%
Alternatives - Gold	4.8%	-1.8%	-1.5%	0.4%	-2.8%	0.6%	5.9%	-5.8%	-0.1%	-1.0%	1.3%	-1.2%	-0.9%	-1.3%	-1.7%	13.0%	31.1%	2.4%	-1.2%	10.9%	19.0%	9.8%	17.9%
Bonds - UK Government	3.1%	0.3%	0.2%	0.5%	-2.0%	0.3%	1.9%	-2.6%	0.3%	0.3%	1.4%	-2.0%	-0.3%	-0.8%	1.6%	5.7%	10.1%	1.8%	-2.0%	5.7%	7.3%	3.5%	8.7%
Bonds - UK Corporate	2.8%	0.1%	0.6%	1.5%	-1.4%	0.8%	1.4%	-2.1%	0.6%	-0.2%	1.7%	-0.8%	0.8%	0.5%	5.1%	11.1%	13.3%	4.5%	-0.8%	4.8%	7.5%	2.7%	8.4%
Bonds - Global Corporate	2.0%	-1.0%	-1.8%	2.1%	-0.5%	0.3%	3.1%	-4.0%	1.0%	-1.2%	0.7%	-4.1%	-4.6%	-4.6%	-3.6%	16.4%	24.4%	-0.4%	-4.1%	7.9%	10.2%	8.0%	8.8%
Bonds - Global Government	1.7%	-0.8%	-2.1%	2.0%	-1.0%	0.3%	3.3%	-4.6%	0.5%	-0.7%	0.2%	-3.5%	-3.9%	-4.8%	-4.8%	14.0%	21.8%	-2.0%	-3.5%	7.9%	11.2%	8.4%	11.8%
Bonds - EM	3.3%	-0.7%	-1.6%	1.3%	-1.1%	-0.5%	4.2%	-3.8%	1.3%	-1.7%	0.7%	-4.8%	-5.7%	-4.3%	-3.7%	28.5%	31.5%	0.8%	-4.8%	9.1%	11.8%	8.5%	11.2%
GBPUSD	-1.6%	1.4%	3.2%	-0.5%	1.0%	1.5%	-2.2%	3.6%	-0.9%	1.8%	-0.1%	5.0%	6.8%	7.4%	12.8%	-5.8%	-16.3%	9.5%	5.0%	7.6%	9.6%	4.0%	24.2%
GBPEUR	0.5%	0.6%	0.9%	-3.5%	-0.6%	-2.1%	-2.7%	4.5%	0.6%	-0.4%	-0.9%	1.5%	0.2%	2.4%	-1.9%	-14.3%	-13.6%	-4.0%	1.5%	7.3%	9.3%	9.8%	25.2%
GBPJPY	-1.6%	0.1%	3.3%	-1.1%	2.5%	-0.5%	-2.4%	6.0%	0.1%	0.8%	0.0%	1.8%	2.7%	6.4%	9.2%	-12.5%	-18.4%	5.3%	1.8%	8.1%	15.0%	5.9%	35.8%
Dollar Index	1.6%	-0.8%	-1.3%	-2.1%	-1.3%	-2.9%	-0.2%	0.4%	1.6%	-1.6%	-1.0%	-3.2%	-5.7%	-4.0%	-10.4%	-6.0%	3.6%	-9.9%	-3.2%	5.4%	7.1%	12.9%	13.8%

Source: Bloomberg, Copia Capital Management.

Notes:
 Returns based on Total return, assuming income is re-invested immediately and rebalanced on due dates.
 The performance of each asset class is represented by relevant indices and expressed in GBP terms, which are selected by Copia Capital Management. Reference to a particular asset class does not represent a recommendation to seek exposure to that asset class. *Maximum Return Drawdown is defined as the largest single drop from peak to trough of the value of an asset class or portfolio over any timeframe within the stated period. This information is included for comparison purposes for the period stated, but is not an indicator of potential maximum loss for other periods or in the future.



Monthly performance overview continued

Volatility Focus portfolio range: performance table

	%mm Performance												Return Characteristics							Risk Characteristics				
	Feb-17	Mar-17	Apr-17	May-17	Jun-17	Jul-17	Aug-17	Sep-17	Oct-17	Nov-17	Dec-17	Jan-18	3M	6M	12M	36M	2016	2017	YTD	Since Inception (28 Oct 13)	Annualised Volatility 1Y	Annualised Volatility 3Y	Maximum Return Drawdown* 1Y	Maximum Return Drawdown* 3Y
1	0.6%	0.0%	0.2%	0.2%	-0.5%	0.4%	0.3%	-0.9%	0.2%	-0.1%	0.4%	-0.6%	-0.2%	-0.7%	0.3%	2.2%	3.6%	0.6%	-0.6%	6.3%	1.6%	2.0%	1.1%	2.2%
2	0.7%	0.0%	0.2%	0.3%	-0.4%	0.4%	0.3%	-0.9%	0.2%	-0.1%	0.4%	-0.6%	-0.2%	-0.7%	0.4%	2.0%	4.4%	0.7%	-0.6%	5.7%	1.6%	2.5%	1.1%	3.3%
3	0.6%	0.7%	0.2%	0.8%	-0.6%	0.8%	0.5%	-0.8%	0.7%	-0.2%	0.9%	0.1%	0.8%	1.2%	3.9%	4.9%	2.3%	3.4%	0.1%	14.0%	2.0%	4.7%	1.3%	7.6%
4	1.2%	0.7%	0.0%	1.0%	-0.6%	0.8%	0.8%	-1.0%	0.8%	-0.4%	1.1%	0.1%	0.8%	1.5%	4.7%	7.6%	3.7%	4.0%	0.1%	18.4%	2.6%	5.9%	1.5%	10.9%
5	1.7%	0.8%	-0.4%	1.8%	-0.7%	1.0%	1.2%	-1.1%	1.3%	-0.4%	1.6%	0.2%	1.5%	2.9%	7.2%	10.0%	2.4%	6.4%	0.2%	20.3%	3.5%	7.2%	2.3%	13.1%
6	2.0%	0.9%	-0.4%	1.9%	-0.6%	1.1%	1.2%	-1.2%	1.3%	-0.2%	1.8%	0.2%	1.7%	3.0%	8.0%	11.4%	2.3%	7.2%	0.2%	21.1%	3.8%	7.9%	2.5%	15.1%
7	2.2%	0.8%	-0.6%	2.0%	-0.7%	1.2%	1.3%	-1.1%	1.7%	-0.1%	1.9%	0.3%	2.1%	4.1%	9.3%	13.7%	3.8%	8.2%	0.3%	24.2%	4.0%	8.3%	2.9%	17.7%
8	2.2%	0.9%	-0.8%	2.2%	-0.7%	1.3%	1.5%	-0.9%	1.8%	-0.1%	1.9%	0.5%	2.3%	4.7%	10.1%	15.7%	4.4%	8.7%	0.5%	25.6%	4.2%	8.9%	3.5%	18.9%
9	2.7%	0.9%	-1.0%	2.5%	-0.6%	1.6%	1.6%	-1.4%	1.8%	-0.2%	2.2%	0.4%	2.5%	4.6%	10.9%	18.5%	5.9%	9.3%	0.4%	28.6%	4.9%	9.2%	4.0%	19.0%
10	2.8%	0.9%	-1.1%	2.6%	-0.6%	1.6%	1.6%	-1.4%	1.9%	-0.1%	2.2%	0.4%	2.5%	4.7%	11.2%	18.4%	5.6%	9.6%	0.4%	28.1%	5.0%	9.5%	4.2%	19.5%

Source: Copia Capital Management

Notes: Returns based on Total return, assuming income is re-invested immediately and rebalanced on due dates. Data as at 31 Jan 2018

Monthly performance overview continued



Copia Select range

	%mm Performance												Return Characteristics							Risk Characteristics				
	Feb-17	Mar-17	Apr-17	May-17	Jun-17	Jul-17	Aug-17	Sep-17	Oct-17	Nov-17	Dec-17	Jan-18	3M	6M	12M	36M	2016	2017	YTD	Since Inception (31 Oct 16)	Annualised Volatility 1Y	Annualised Volatility 3Y	Maximum Return Drawdown* 1Y	Maximum Return Drawdown* 3Y
Cautious	2.6%	0.1%	-0.7%	1.1%	-1.2%	0.2%	2.4%	-2.7%	1.0%	-0.3%	1.4%	-2.0%	-0.9%	-0.3%	1.9%	#N/A	#N/A	#N/A	-2.0%	0.5%	5.7%	#N/A	3.3%	#N/A
Moderate	3.4%	0.1%	-1.1%	1.7%	-0.8%	0.7%	2.4%	-2.7%	1.6%	-0.1%	1.6%	-1.8%	-0.3%	1.0%	5.0%	#N/A	#N/A	#N/A	-1.8%	4.7%	6.3%	#N/A	3.6%	#N/A
Balanced	3.8%	0.2%	-1.3%	1.8%	-0.5%	0.9%	2.5%	-2.3%	2.2%	0.1%	1.9%	-1.1%	0.8%	3.1%	8.2%	#N/A	#N/A	#N/A	-1.1%	9.2%	6.3%	#N/A	3.6%	#N/A
Growth	4.1%	0.3%	-1.5%	1.9%	-0.3%	1.0%	2.4%	-2.2%	2.5%	0.1%	1.8%	-0.9%	1.0%	3.7%	9.4%	#N/A	#N/A	#N/A	-0.9%	11.0%	6.4%	#N/A	3.6%	#N/A
Equity	4.2%	0.4%	-1.6%	2.0%	0.0%	1.1%	2.4%	-2.0%	3.0%	0.1%	1.9%	-0.5%	1.5%	4.9%	11.4%	#N/A	#N/A	#N/A	-0.5%	13.8%	6.4%	#N/A	4.1%	#N/A

Source: Copia Capital Management

Smart Beta portfolio range: performance table

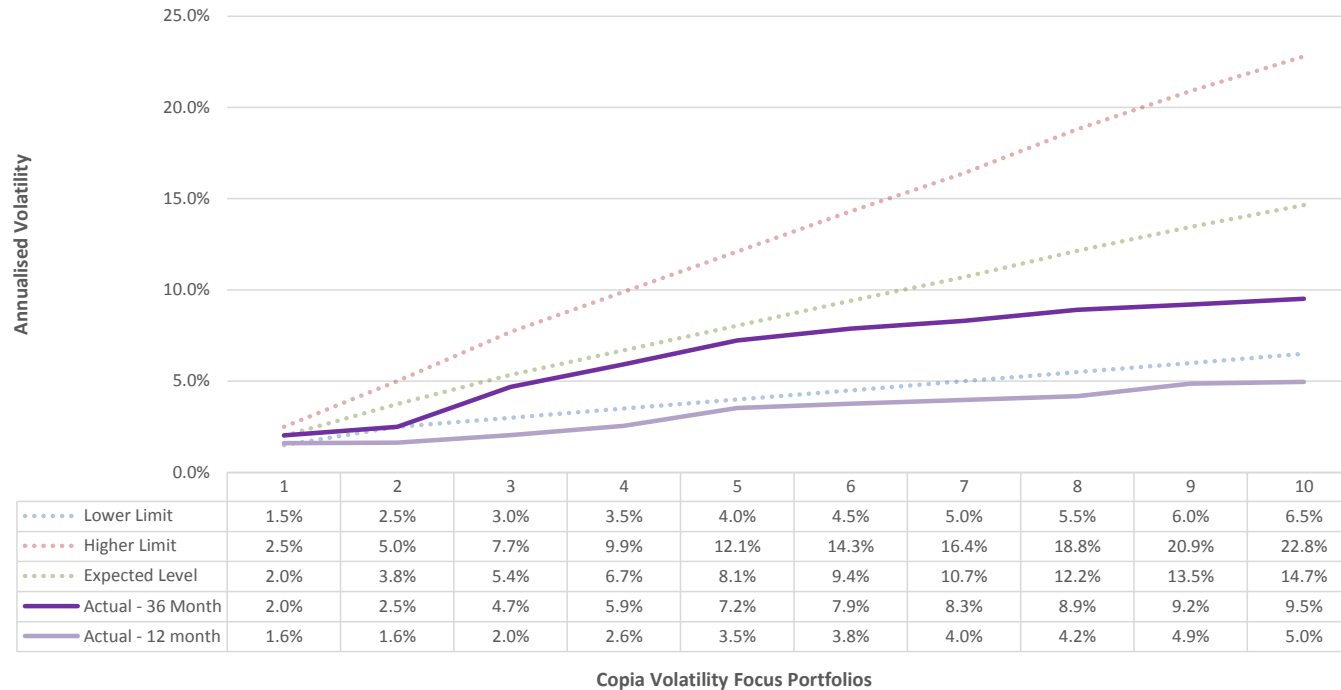
	%mm Performance												Return Characteristics							Risk Characteristics				
	Feb-17	Mar-17	Apr-17	May-17	Jun-17	Jul-17	Aug-17	Sep-17	Oct-17	Nov-17	Dec-17	Jan-18	3M	6M	12M	36M	2016	2017	YTD	Since Inception (14 Mar 16)	Annualised Volatility 1Y	Annualised Volatility 3Y	Maximum Return Drawdown* 1Y	Maximum Return Drawdown* 3Y
Copia First Trust	3.3%	1.8%	-1.9%	3.1%	-0.3%	2.5%	3.2%	-1.3%	2.5%	-0.2%	1.9%	0.5%	2.2%	6.6%	16.0%	#N/A	#N/A	#N/A	0.5%	39.8%	6.3%	#N/A	5.1%	#N/A
Copia Dorsey Wright	3.2%	1.7%	-2.2%	3.3%	0.3%	2.3%	3.0%	-1.9%	1.9%	-0.1%	1.8%	1.4%	3.0%	6.2%	15.5%	#N/A	#N/A	#N/A	1.4%	41.7%	6.4%	#N/A	5.0%	#N/A

Source: Copia Capital Management

Notice: The performance shown represents the results of the model portfolio managed by Copia Capital Management. Copia model performance and comparisons are shown gross and take no account of the Nova platform charge or Copia Capital Management charge. Individual investor performance will differ due to factors specific to the investors account, trading drag and charges and the effect of Platform, Investment management, Adviser charges and investment wrapper type. Returns based on Total return, assuming income is re-invested immediately and rebalanced on due dates. Data as at 31 Jan 2018

Monthly performance overview continued

Outcome analysis as at 31 January 2018



For Adviser Use Only © Copia Capital Management, a division of Novia Financial plc. All Rights Reserved.

Disclaimer: The performance shown represents the results of the model portfolio managed by Copia Capital Management. Copia model performance and comparisons are shown gross and take no account of the Novia platform charge or Copia Capital Management charge. Individual investor performance will differ due to factors specific to the investors account, trading drag and charges and the effect of Platform, Investment management and Adviser charges. This illustrative document is intended for investors where advice has been given by Advisers. The value of investments may go down as well as up, investors may not get back the amount invested, figures quoted relate to the past and past performance is not a reliable indicator of future. Models are prepared in accordance with tolerance to risk and not client circumstances and information is from given sources to be reliable and accurate, which Copia cannot warrant for accuracy or completeness.

➤ Copia Capital Management is a trading name of Novia Financial Plc. Novia Financial plc is a limited company registered in England & Wales. Register Number: 06467886.
Registered office: Cambridge House, Henry St, Bath, Somerset BA1 1JS. Novia Financial plc is authorised and regulated by the Financial Conduct Authority. Register Number: 481600

